



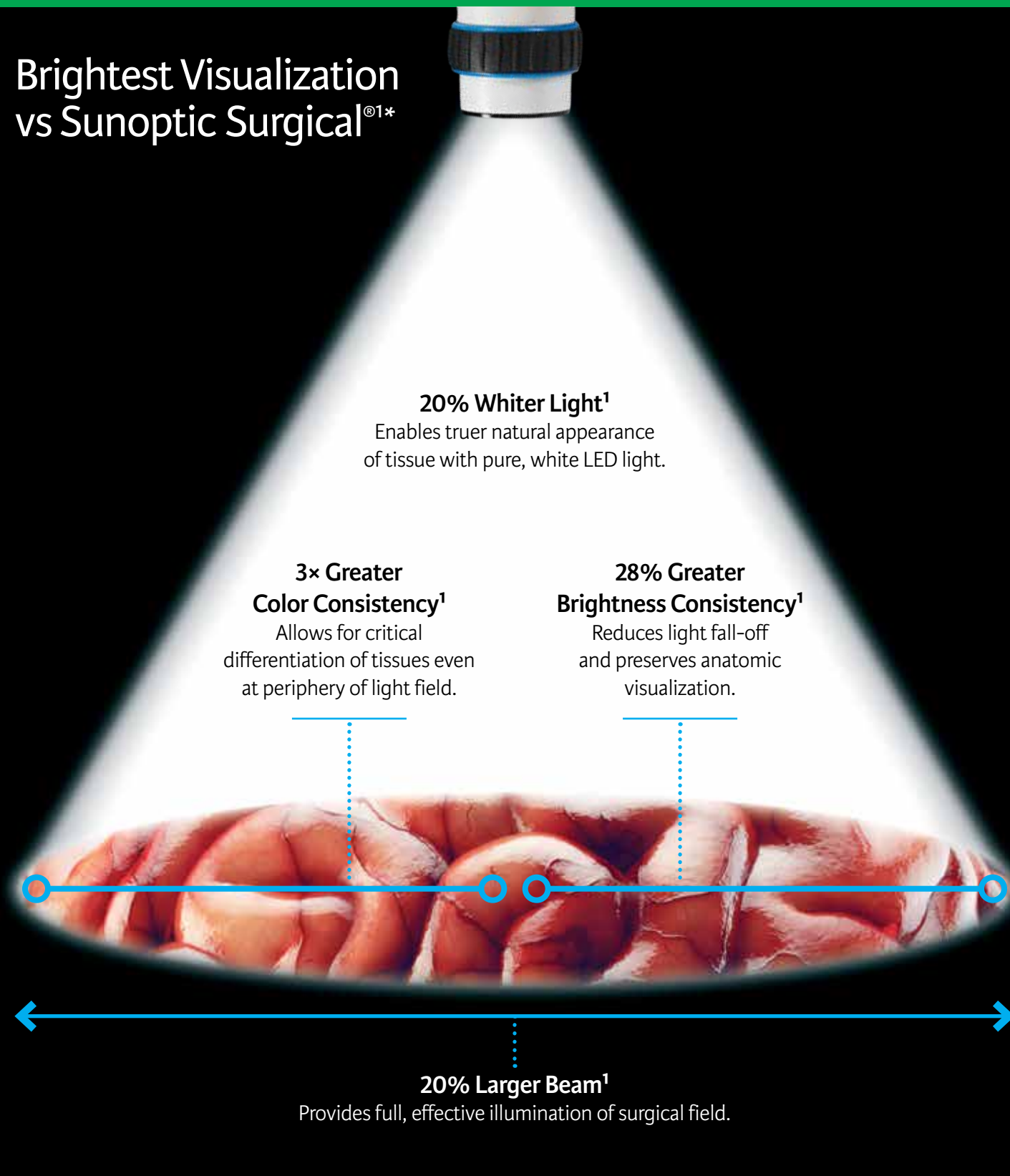
DUO MORE.

MORE Light.
MORE Comfort.

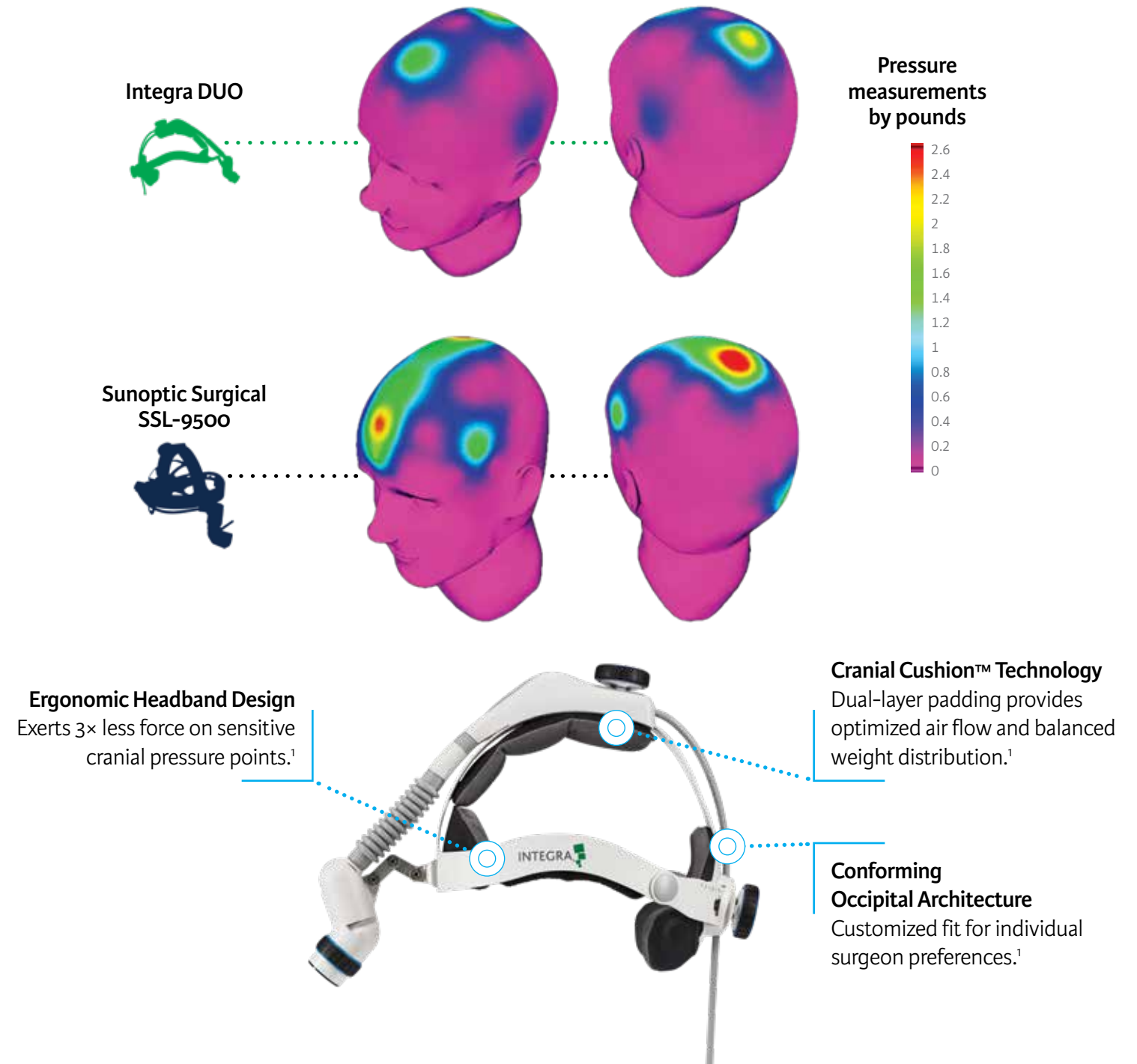
Integra® DUO LED Surgical Headlight,
with the brightest visualization and
superior comfort, lets you focus on
your work—not your gear.

Experience the Integra DUO More Difference.

Brightest Visualization vs Sunoptic Surgical^{®1*}



Superior Comfort vs Sunoptic Surgical^{1*}



Integra DUO LED Surgical Headlight

Why “Make Do”
When You Can “DUO More”?

Ordinary surgical headlight systems come with discomfort, fatigue, irritation, and compromise.

It's time to experience the Integra DUO More Difference: Integra DUO LED surgical headlights deliver the brightest visualization and superior comfort, so you can focus on what matters most.



WHAT MATTERS MOST TO YOU?

Brightest Visualization^{1*}

<input type="checkbox"/>	20% Whiter Light
<input type="checkbox"/>	3× Greater Color Consistency
<input type="checkbox"/>	28% Greater Brightness Consistency
<input type="checkbox"/>	20% Larger Beam

Superior Comfort^{1*}

<input type="checkbox"/>	Comfort Design
<input type="checkbox"/>	Cranial Cushion Technology
<input type="checkbox"/>	Conforming Occipital Architecture
<input type="checkbox"/>	Ergonomic Headband Design

References: 1. Data on file. Integra LifeSciences. Plainsboro, NJ, USA
*All comparisons vs Sunoptic SSL-9500.

Rx ONLY

Caution: Federal (USA) law restricts this device to sale by or on the order of a physician.

INDICATIONS

The Integra DUO LED Surgical Headlight System is designed to provide supplemental illumination aiding visualization during surgical, diagnostic, or therapeutic procedures.

CONTRAINDICATIONS

The Integra DUO LED Surgical Headlight System is contraindicated for use in neonatal transillumination, ophthalmic procedures, photosensitive patients or patients who have received photosensitizing agents (hematoporphyrin derivatives) within three months.

Availability of these products might vary from a given country or region to another, as a result of specific local regulatory approval or clearance requirements for sale in such country or region.

- Non contractual document. The manufacturer reserves the right, without prior notice, to modify the products in order to improve their quality.
- Warning: Applicable laws restrict these products to sale by or on the order of a physician.
- Consult product labels and inserts for any indication, contraindications, hazards, warnings, precautions, and instructions for use.

For more information or to place an order, please contact:

United States, Canada, Asia, Pacific, Latin America

USA 800-654-2873 ▪ 888-980-7742 fax

International +1 609-936-5400 ▪ +1 609-750-4259 fax

integralife.com

