

GEISTER®

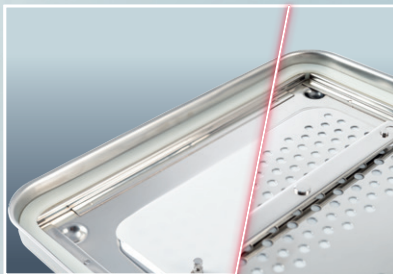


SurgiBOX™



For optimum sterile supply with permanent PTFE filters

### PTFE Filter



### stainless steel



### coloured lids optional



## SurgiBOX™ Sterilization Containers

### Sterilize, store and transport without contamination with our improved aseptic container systems

Additionally to the stack buttons for easy storage and secure stacking and the silicone seal all around the lid, we now have equipped this system with permanent PTFE filters. The solid filter holder ensures a firm and germ-sealed positioning of the provided permanent PTFE filters. These PTFE permanent filters are made for at least 1200 sterilization cycles. When used professionally, up to 5000 sterilization cycles are possible. The special safety lock of the filter holder allows the longtime filters to be changed quickly and easily, if required. Well-dimensioned perforated areas in the base and in the lid of the supply containers provide optimum drying conditions for the aseptic materials. Also available are containers that are only perforated in lid and not in the base as well as non-perforated return containers.

All containers come with a scratch- and wear-resistant stainless steel lid and a lightweight anodized aluminium base combining low-wear and easy care with minimum weight. Aluminium also provides for higher heat capacity for better drying. The carrying handles are heat insulated. Closure of lid is easy and can even be done with a single hand. Aseptic safety seals can be applied if desired. Interchangeable identification and sterilization tags help to identify the case and distinguish its contents.

Insert trays are available made of stainless steel wire-mesh (stackable) or of perforated stainless steel. Optional silicone mats are available to be placed in container base or trays for maximum protection of your valuable instruments. The lids of our standard sterile container system, usually delivered with scratch-resistant stainless steel lid, are now optionally also available in color-coded aluminium, in the colors red, blue, green and yellow, in order to facilitate managing the sets in the hospitals and reduce the weight further.



SurgiBOX™ 600, 1/1 size



---

SurgiBOX™ 300, 1/2 size



---

SurgiBOX™ Mini, Type 1



## SurgiBOX™ Sterilization Containers

77-2100.05

77-2100.04

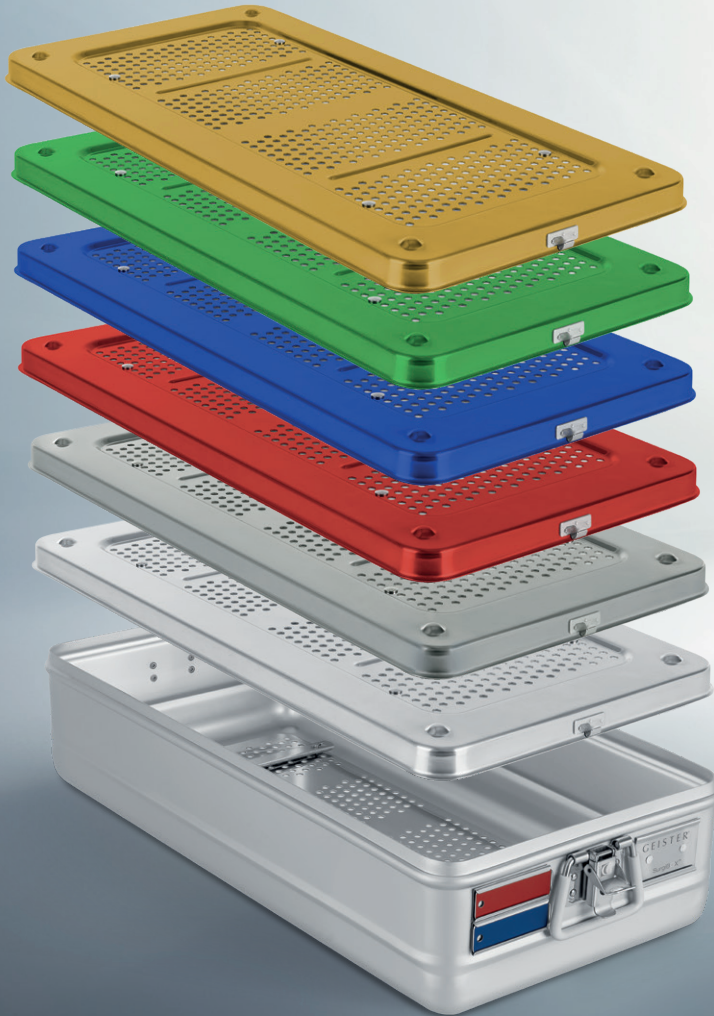
77-2100.03

77-2100.02

77-2100.01

77-2100.00

Bottom  
77-2100.14



Return sterilization  
container



77-2150 +  
77-2110.14

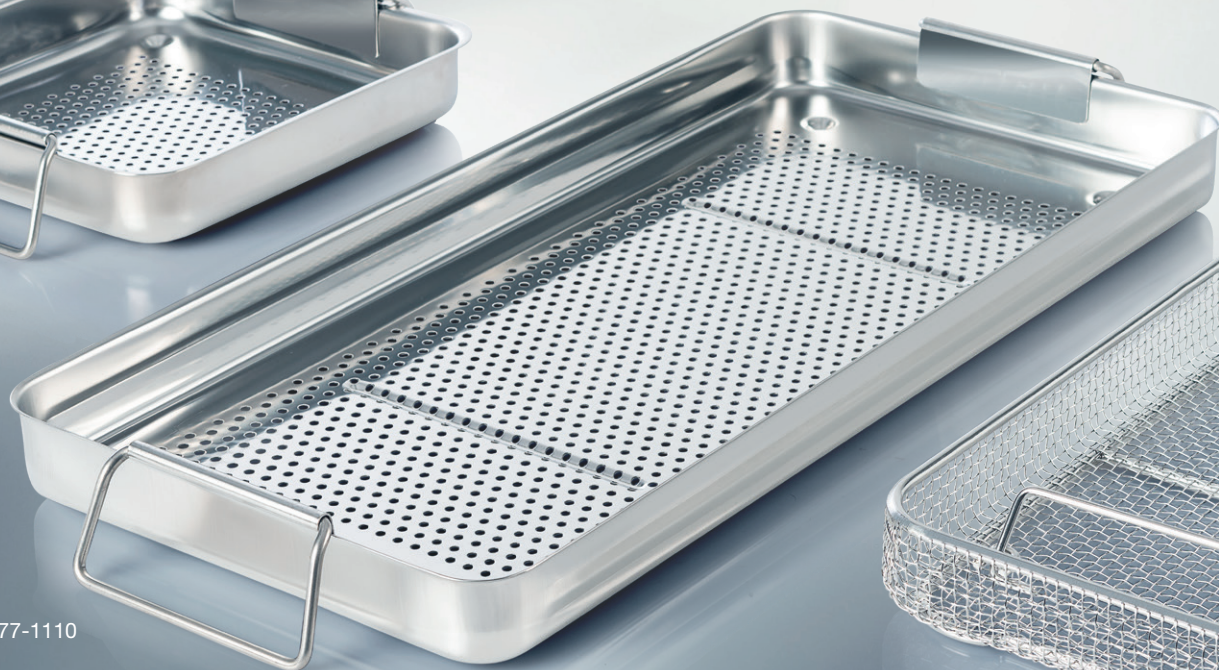
### Color coding for perforated Lids:

|                      |            |
|----------------------|------------|
| stainless steel lid  | XX-XXXX.00 |
| aluminium grey lid   | XX-XXXX.01 |
| aluminium red lid    | XX-XXXX.02 |
| aluminium blue lid   | XX-XXXX.03 |
| aluminium green lid  | XX-XXXX.04 |
| aluminium golden lid | XX-XXXX.05 |

| Container Size<br>mm*          | Height<br>mm* | SurgiBOX™<br>complete   |   | Container Bottom<br>for individual set, Aluminium            |                                    | Container Lid<br>for individual set, Stainless steel      |                                   |
|--------------------------------|---------------|---|---|--|------------------------------------|---|-----------------------------------|
|                                |               | Bottom perforated<br>(2 PTFE filters<br>included)<br>Art.-No. | Bottom unperforated,<br>(1 PTFE filter<br>included)<br>Art.-No. | Bottom perforated<br>(1 PTFE filter<br>included)<br>Art. No. | Bottom<br>unperforated<br>Art. No. | Lid perforated**<br>(1 PTFE Filter<br>included)<br>Art.No | Lid<br>unperforated***<br>Art.No. |
| <b>SurgiBOX™ 600, 1/1 size</b> |               |   |   |  |                                    |   |                                   |
| 600 × 290                      | 100           | 77-1006   | 77-1026   | 77-2100.10   | 77-2110.10                         | 77-2100.00**  | 77-2150.00                        |
|                                | 140           | 77-1004   | 77-1024   | <b>77-2100.14</b>  | <b>77-2110.14</b>                  |   |                                   |
|                                | 170           | 77-1002   | 77-1022   | 77-2100.17   | 77-2110.17                         |   |                                   |
|                                | 210           | 77-1000   | 77-1020   | 77-2100.21   | 77-2110.21                         |   |                                   |
| <b>SurgiBOX™ 450, 3/4 size</b> |               |   |   |  |                                    |   |                                   |
| 450 × 290                      | 100           | 77-1046   | 77-1076   | 77-2200.10   | 77-2210.10                         | 77-2200.00**  | 77-2250.00                        |
|                                | 140           | 77-1044   | 77-1074   | 77-2200.14   | 77-2210.14                         |   |                                   |
|                                | 170           | 77-1042   | 77-1072   | 77-2200.17   | 77-2210.17                         |   |                                   |
|                                | 210           | 77-1040   | 77-1070   | 77-2200.21   | 77-2210.21                         |   |                                   |
| <b>SurgiBOX™ 300, 1/2 size</b> |               |   |   |  |                                    |   |                                   |
| 300 × 290                      | 100           | 77-1014   | 77-1034   | 77-2300.10   | 77-2310.10                         | 77-2300.00**  | 77-2350.00                        |
|                                | 140           | 77-1012   | 77-1032   | 77-2300.14   | 77-2310.14                         |   |                                   |
|                                | 170           | 77-1010   | 77-1030   | 77-2300.17   | 77-2310.17                         |   |                                   |
|                                | 210           | 77-1008   | 77-1028   | 77-2300.21   | 77-2310.21                         |   |                                   |
| <b>SurgiBOX™ Mini, Type 3</b>  |               |   |   |  |                                    |   |                                   |
| 460 × 190                      | 100           | 77-1019   | 77-1039   | 77-2440.10   | 77-2450.10                         | 77-2440.00**  |                                   |
|                                | 190           | 77-1019.19  | 77-1039.19  | 77-2440.19   | 77-2450.19                         |   |                                   |
| <b>SurgiBOX™ Mini, Type 2</b>  |               |   |   |  |                                    |   |                                   |
| 370 × 175                      | 100           | 77-1018   | 77-1038   | 77-2420.10   | 77-2430.10                         | 77-2420.00**  |                                   |
|                                | 190           | 77-1018.19  | 77-1038.19  | 77-2420.19   | 77-2430.19                         |   |                                   |
| <b>SurgiBOX™ Mini, Type 1</b>  |               |   |   |  |                                    |   |                                   |
| 305 × 165                      | 70            | 77-1017   | 77-1037   | 77-2400.07   | 77-2410.07                         | 77-2401.00**  |                                   |
|                                | 100           | 77-1015   | 77-1035   | 77-2400.10   | 77-2410.10                         | 77-2400.00**  |                                   |



77-1116

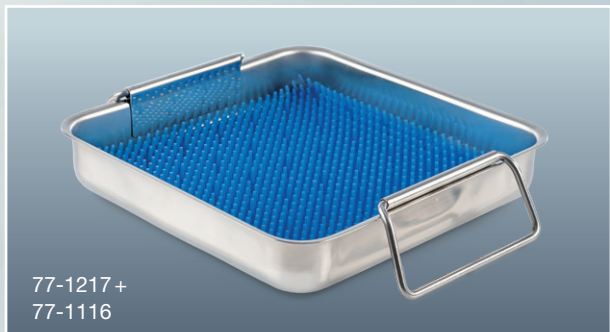


77-1110

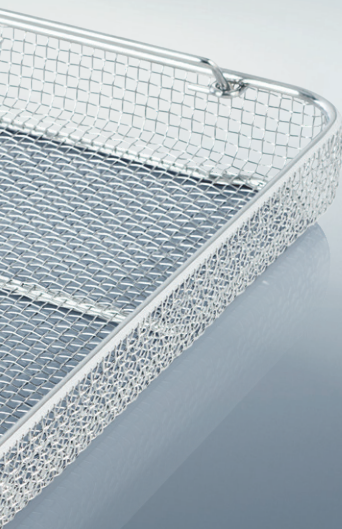


77-1100





77-1217+  
77-1116



## Trays

### Wire-mesh trays with handles

#### SurgiBOX™ 600, 1/1 size

| Art.-No.       | Measure mm  |
|----------------|-------------|
| <b>77-1100</b> | 480×250×50  |
| 77-1100.07     | 480×250×70  |
| 77-1100.10     | 480×250×100 |
| 77-1104        | 540×250×50  |
| 77-1104.07     | 540×250×70  |
| 77-1104.10     | 540×250×100 |

#### SurgiBOX™ 450, 3/4 size

| Art.-No.   | Measure mm  |
|------------|-------------|
| 77-1101    | 404×250×50  |
| 77-1101.07 | 404×250×70  |
| 77-1101.10 | 404×250×100 |

#### SurgiBOX™ 300, 1/2 size

| Art.-No.   | Measure mm  |
|------------|-------------|
| 77-1102    | 240×250×50  |
| 77-1102.07 | 240×250×70  |
| 77-1102.10 | 240×250×100 |

### Perforated stainless steel trays with handles

#### SurgiBOX™ 600, 1/1 size

| Art.-No.       | Measure mm |
|----------------|------------|
| 77-1112        | 480×265×50 |
| <b>77-1110</b> | 550×265×50 |

#### SurgiBOX™ 300, 1/2 size

| Art.-No.       | Measure mm |
|----------------|------------|
| <b>77-1116</b> | 240×240×50 |
| 77-1114        | 270×265×50 |

## Silicone Mats, Blue

#### SurgiBOX™ 600, 1/1 size

| Art.-No. | Measure mm |
|----------|------------|
| 77-1215  | 470×245×15 |
| 77-1211  | 530×250×15 |

#### SurgiBOX™ 300, 1/2 size

| Art.-No.       | Measure mm |
|----------------|------------|
| <b>77-1217</b> | 222×222×15 |
| 77-1216        | 241×222×15 |
| 77-1212        | 250×247×15 |

#### SurgiBOX™ Mini, Type 1-3

| Art.-No. | Measure mm |
|----------|------------|
| 77-1218  | 252×135×15 |

### Silicon Mats, universal size for cutting down

| Art.-No.    | Measure mm | Description                          |
|-------------|------------|--------------------------------------|
| 77-1220     | 600×300×15 | blue                                 |
| 77-1220.WN  | 600×300×15 | without nubs on the underside, blue  |
| 77-1220.WNN | 600×300×15 | without nubs on the underside, black |

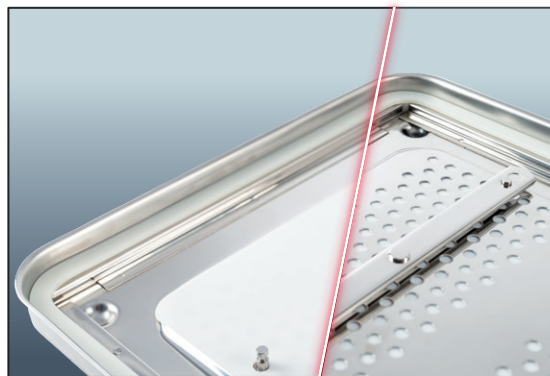


GEISTER®  
SurgiBOX™

## Indicator Labels

for SurgiBOX™ 600, 1/1 size,  
for SurgiBOX™ 450, 3/4 size and  
for SurgiBOX™ 300, 1/2 size

| Art.-No. | Description          |
|----------|----------------------|
| 77-1180  | Pack. unit 1000 pcs. |



## PTFE Permanent Filter

for 1200 till 5000 cycles

| Art.-No. | Description            |
|----------|------------------------|
| 77-1135  | for 1/1 Container      |
| 77-1139  | for 3/4 Container      |
| 77-1136  | for 1/2 Container      |
| 77-1137  | for Mini, Type 1 and 2 |
| 77-1138  | for Mini, Type 3       |

## Plugs

without indicator

| Art.-No.  | Description                |
|-----------|----------------------------|
| 77-1170   | blue, Pack. unit 1000 pcs. |
| 77-7121.R | red, Pack. unit 1000 pcs.  |

with indicator

| Art.-No.  | Description                |
|-----------|----------------------------|
| 77-1171   | blue, Pack. unit 1000 pcs. |
| 77-7120.R | red, Pack. unit 1000 pcs.  |



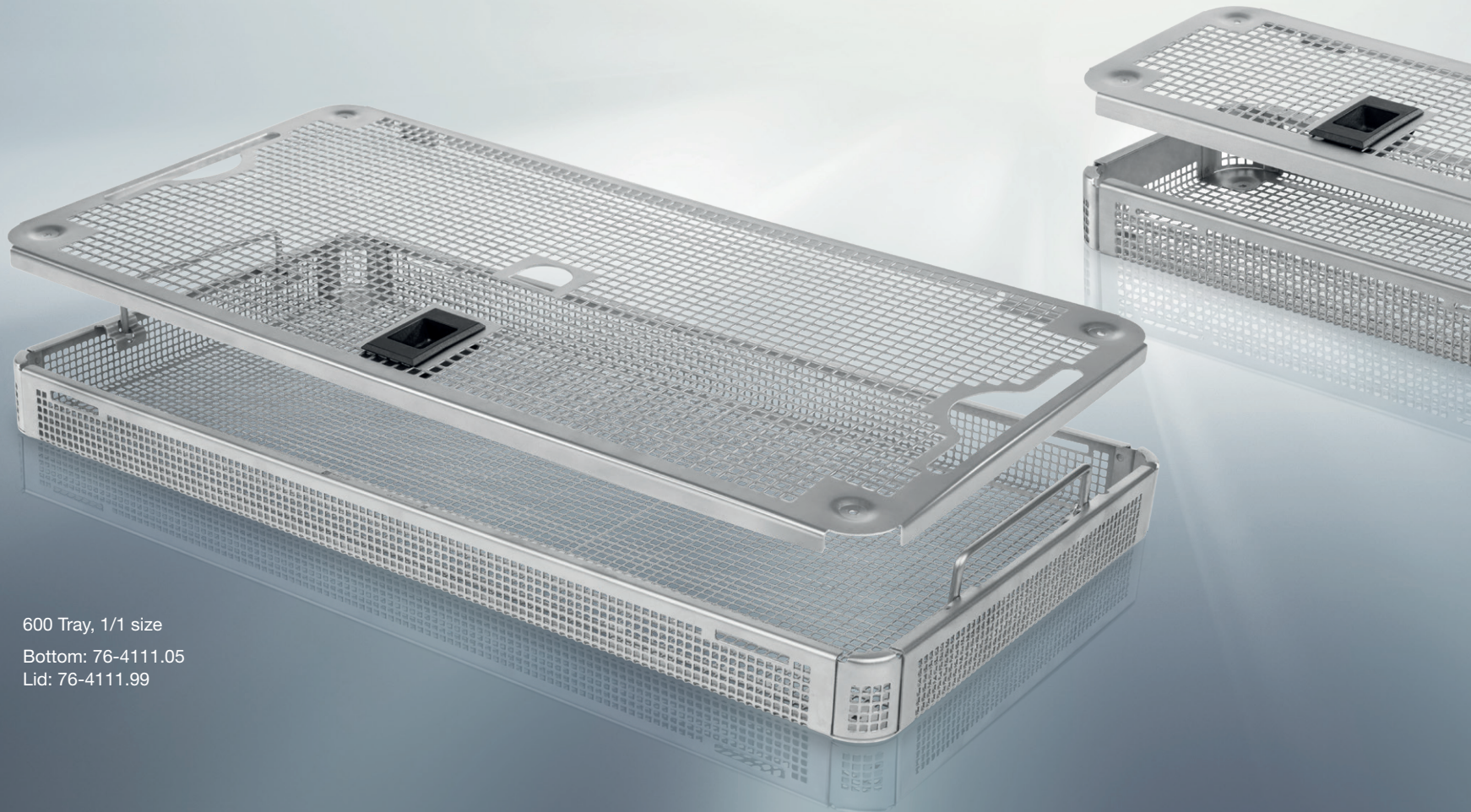
## Marking Labels

Metal Label without engraving

| Art.-No. | Description |
|----------|-------------|
| 77-1120  | Blue        |
| 77-1121  | Red         |
| 77-1122  | Green       |
| 77-1123  | Yellow      |
| 77-1124  | Black       |
| 77-1125  | Brown       |

Metal Label with engraving  
(one or two line with specify text)

| Art.-No.  | Description |
|-----------|-------------|
| 77-1120.E | Blue        |
| 77-1121.E | Red         |
| 77-1122.E | Green       |
| 77-1123.E | Yellow      |
| 77-1124.E | Black       |
| 77-1125.E | Brown       |



600 Tray, 1/1 size

Bottom: 76-4111.05

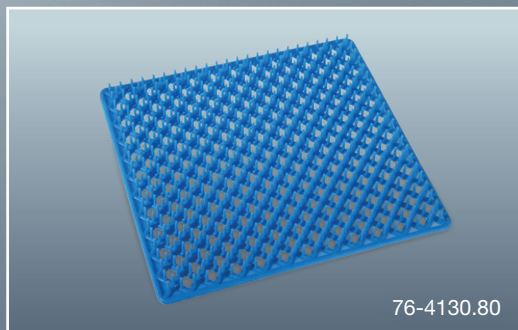
Lid: 76-4111.99



Mini tray

Bottom: 76-4140.05

Lid: 76-4140.99



76-4130.80

## Stainless Steel Trays

600 tray, 1/1 size

| Art.-No.          | Measure mm     |
|-------------------|----------------|
| 76-4110.03        | 536 × 243 × 25 |
| 76-4110.05        | 536 × 243 × 45 |
| 76-4110.07        | 536 × 243 × 65 |
| 76-4110.10        | 536 × 243 × 95 |
| 76-4111.03        | 480 × 243 × 25 |
| <b>76-4111.05</b> | 480 × 243 × 45 |
| 76-4111.07        | 480 × 243 × 65 |
| 76-4111.10        | 480 × 243 × 95 |

450 tray, 3/4 size

| Art.-No.   | Measure mm     |
|------------|----------------|
| 76-4120.03 | 405 × 243 × 25 |
| 76-4120.05 | 405 × 243 × 45 |
| 76-4120.07 | 405 × 243 × 65 |
| 76-4120.10 | 405 × 243 × 95 |

300 tray, 1/2 size

| Art.-No.   | Measure mm     |
|------------|----------------|
| 76-4130.03 | 243 × 243 × 25 |
| 76-4130.05 | 243 × 243 × 45 |
| 76-4130.07 | 243 × 243 × 65 |
| 76-4130.10 | 243 × 243 × 95 |

Mini tray

| Art.-No.          | Measure mm     |
|-------------------|----------------|
| <b>76-4140.05</b> | 270 × 123 × 45 |

## Dental

| Art.-No.   | Measure mm     |
|------------|----------------|
| 76-4150.05 | 270 × 170 × 30 |

## Stainless Steel Lid

600 tray, 1/1 size

| Art.-No.          | Measure mm     |
|-------------------|----------------|
| 76-4110.99        | 539 × 246 × 15 |
| <b>76-4111.99</b> | 483 × 246 × 15 |

450 tray, 3/4 size

| Art.-No.   | Measure mm     |
|------------|----------------|
| 76-4120.99 | 408 × 246 × 15 |

300 tray, 1/2 size

| Art.-No.   | Measure mm     |
|------------|----------------|
| 76-4130.99 | 246 × 246 × 15 |

Mini tray

| Art.-No.          | Measure mm     |
|-------------------|----------------|
| <b>76-4140.99</b> | 272 × 125 × 15 |

Dental

| Art.-No.   | Measure mm     |
|------------|----------------|
| 76-4150.99 | 272 × 172 × 15 |

## Silicone Mats

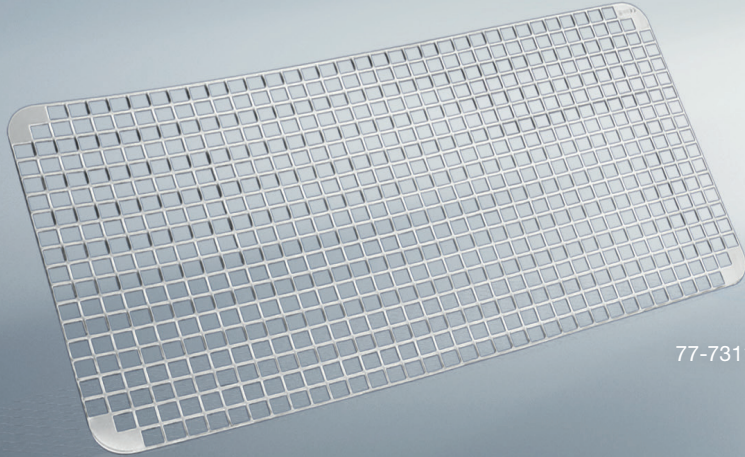
perforated, blue

| Art.-No.          | Measure mm | Description        |
|-------------------|------------|--------------------|
| 76-4110.80        | 535 × 240  | 600 tray, 1/1 size |
| 76-4111.80        | 440 × 240  | 600 tray, 1/1 size |
| 76-4120.80        | 390 × 240  | 450 tray, 3/4 size |
| <b>76-4130.80</b> | 230 × 240  | 300 tray, 1/2 size |
| 76-4140.80        | 260 × 113  | 150 tray, Mini     |

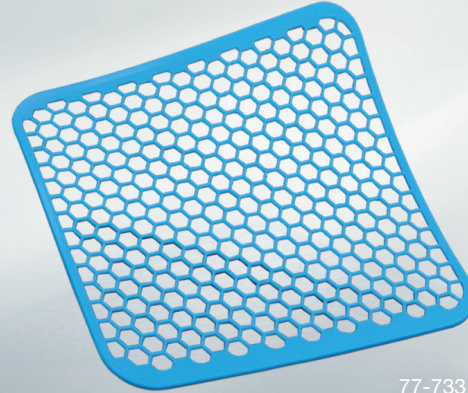
## Accessories

Feet, plastic

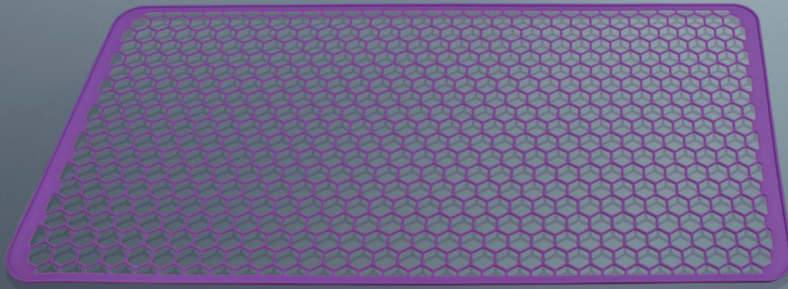
| Art.-No.   | Measure mm |
|------------|------------|
| 76-4160.02 | 10         |



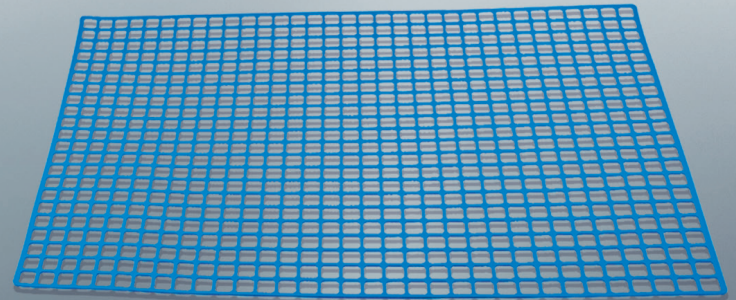
77-7311



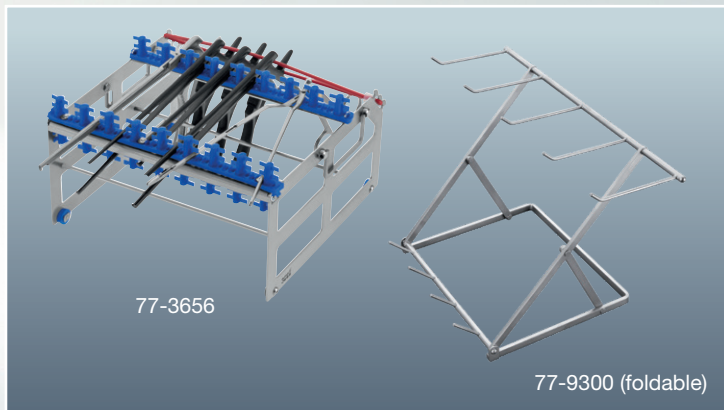
77-7331



77-7340



77-7314

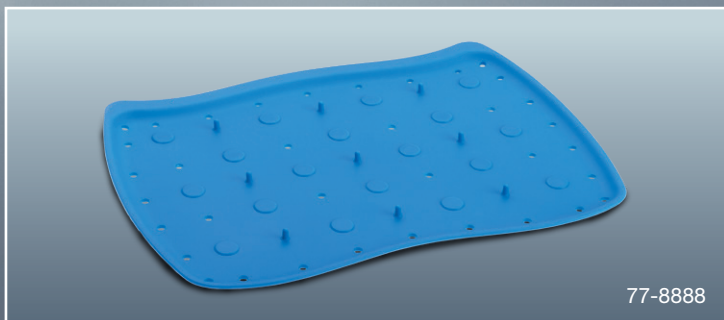


77-3656

77-9300 (foldable)



00-9012



77-8888

## Silicone Mats

| Art.-No.       | Measure mm | Description                           |
|----------------|------------|---------------------------------------|
| <b>77-7311</b> | 445 × 230  | rigid, 1/1 size                       |
| 77-7313        | 480 × 250  | flexible, mesh, blue, 1/1 size        |
| <b>77-7331</b> | 238 × 248  | flexible, mesh, blue, 1/2 size        |
| <b>77-7340</b> | 460 × 229  | honeycomb structure, violet, 1/1 size |
| <b>77-7314</b> | 600 × 400  | flexible, mesh, 2 mm, blue            |

## Racks

| Art.-No.       | Description                  | Length             |
|----------------|------------------------------|--------------------|
| <b>77-3656</b> | for max. 8 Kerrison Rongeurs | 225 × 232 × 130 mm |
| 77-9300        | Instrument Rack foldable     |                    |

## Instrument Oiler

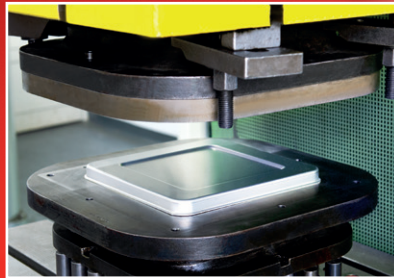
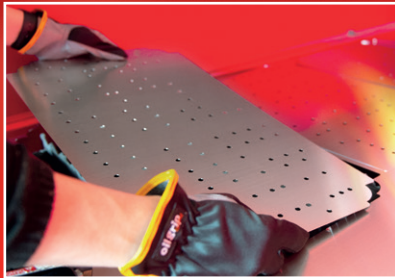
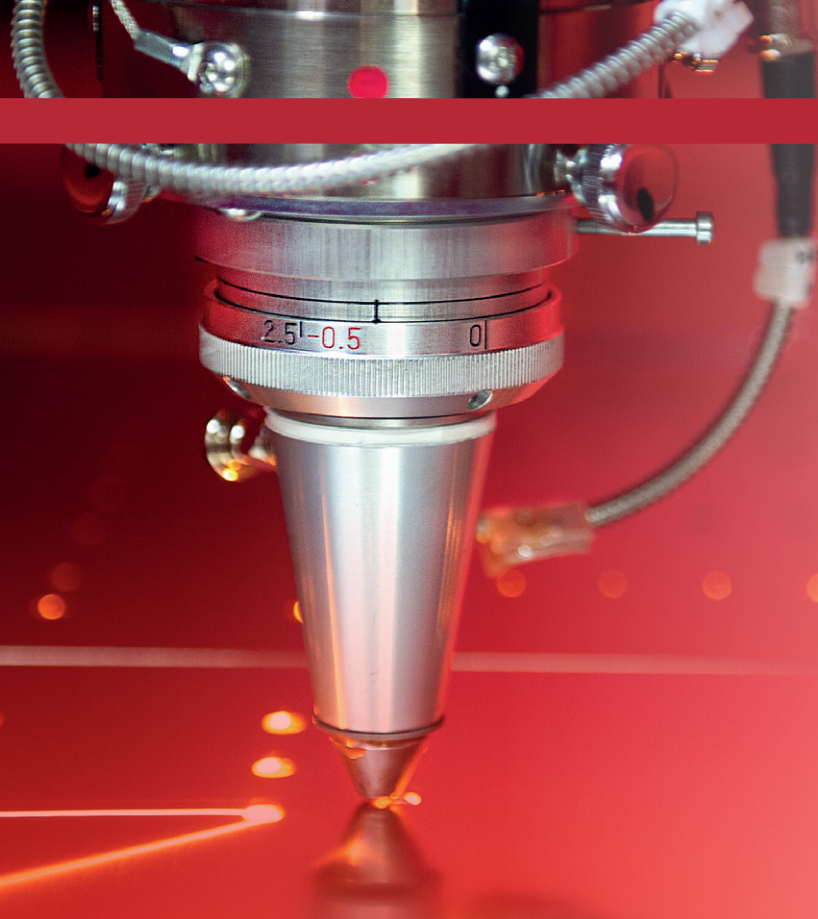
| Art.-No.       | Description  |
|----------------|--|
| <b>00-9012</b> | 7 mm stainless steel tip, sterilizable, 12 ml/1000 drops |

## Magnetic Mat

| Art.-No.       | Measure mm | Description                                |
|----------------|------------|--|
| <b>77-8888</b> | 330 × 235  | Silicone magnetic mat, 18 magnetic inserts |



Private Label/OEM





# PRIVATE LABEL / OEM

## **Innovative products through optimized processes.**

Leading names and “global players” in the medical device industry rely on our manufacturing expertise. Learn why quality “made in Germany” is trusted worldwide and let us also custom make your products or parts! Our OEM division provides complete contract manufacturing capabilities for reusable surgical instruments, implants, devices, parts and components for almost any surgical disciplines. We also supply precision parts and components made from stainless steels, titanium, carbon, cycling, PEEK, aluminum and other materials. In addition to milling, turning, EDM and grinding parts we manufacture and custom design fixtures and tooling systems for you. Confidentiality is guaranteed of course. Our expertise ranges from prototype through to series. We can help you with all aspects and at all stages of manufacturing.

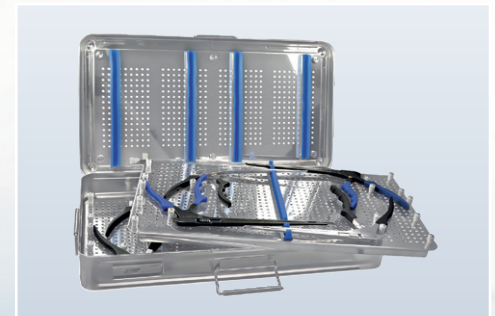
---



## SurgiBOX™ Micro

with 2 permanent filters

| Art.-No.   | Outer dimension mm | Description                                    |
|------------|--------------------|--|
| 77-0105.01 | 285×280×55         | for 12 bayonet curettes, with Fairgrip™ handle |



## SurgiBOX™ Micro

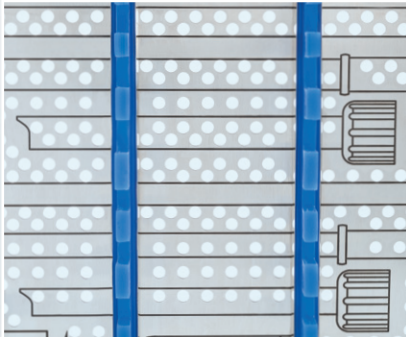
duplex with 2 permanent filters

| Art.-No.   | Outer dimension mm | Description               |
|------------|--------------------|---------------------------|
| 77-0120.01 | 495×270×75         | for max. 8 K-Rex™ punches |

\* Rongeurs not included



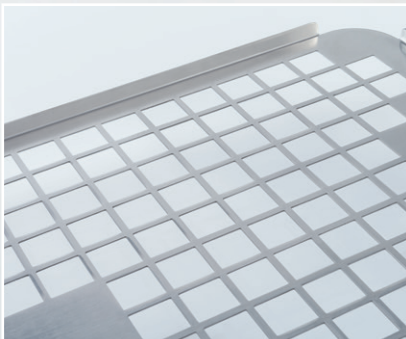
individual handles

*customized trays*

customized engraving and silicon racks



individual feet



customized lid



individual closures

## Individual Products

**UNIQUE**

for your tailor-made solution

**SAFE**

for your products and your patients

**DURABLE**

for your quality understanding

**RECOGNITION**

for your branding



SurgiBOX™ Micro Sterilization Cassettes



## PTFE Filter



## stainless steel



## SurgiBOX™ Micro

### Stainless steel with silicone inserts and permanent PTFE (Teflon) filters

Stainless steel guarantees a solid, scratch- and wear-resistant exterior surface for long-term use. We now have equipped this system with permanent PTFE filters. The solid filter holder ensures a firm and germ-sealed positioning of the provided permanent PTFE filters. These PTFE permanent filters are made for at least 1200 sterilization cycles. When used professionally, up to 5000 sterilization cycles are possible. A silicone seal in the lid keeps germs away. Silicone cushioning strips, mats or racks in our instrument cases fix and protect the instruments and keep them in good condition and clean order. Interchangeable identification tags identify the case and distinguish its contents (choice of text and colours).

A maximum amount of instruments can be stored in a minimum of space. The cases are available with 1 or 2 levels in various dimensions. Silicone depressing bars at the inner side of the lid fix the position of the instruments underneath. The trays are easily removable from the container with heat-insulated knobs.

The 3 silicone strips can be replaced with a full silicone mat (option) if desired. Special configurations and trays are available on request. Models with a solid silicone rack can be adapted to your procedural sets with each instrument positioned on its defined place and optional laser-mark illustrations on the tray.

All instrument sterilization cases have a perforated base and lid for steam sterilization and are fitted with permanent PTFE filters.



77-0110

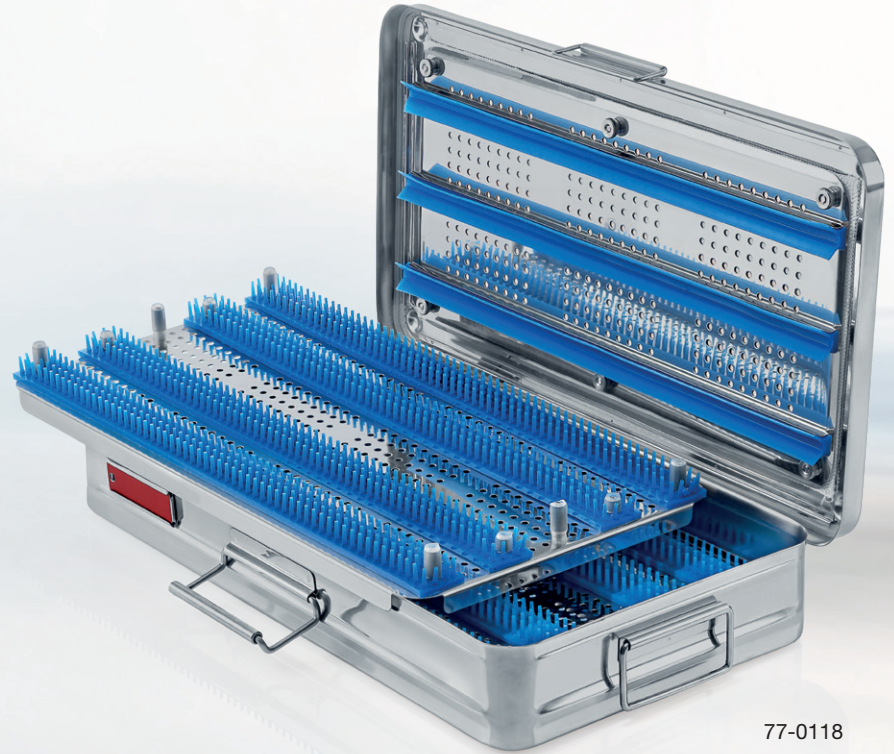


77-0121





77-0103



77-0118



## PTFE Permanent Filter

for 1200 till 5000 cycles

| Art.-No.   | for Type |
|------------|----------|
| 77-0101.PE | 01       |
| 77-0102.PE | 02       |
| 77-0103.PE | 03       |
| 77-0104.PE | 04       |
| 77-0105.PE | 05       |
| 77-0106.PE | 06       |
| 77-0107.PE | 07       |
| 77-0108.PE | 08       |
| 77-0109.PE | 09       |
| 77-0110.PE | 10       |

## Locking Seal

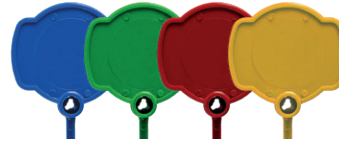
220 mm, pack of 1.000 pieces,  
with indicator

| Art.-No.  | Description |
|-----------|-------------|
| 77-7123.B | Blue        |
| 77-7123.Y | Yellow      |



without indicator

| Art.-No.  | Description |
|-----------|-------------|
| 77-7122.B | Blue        |
| 77-7122.G | Green       |
| 77-7122.R | Red         |
| 77-7122.Y | Yellow      |



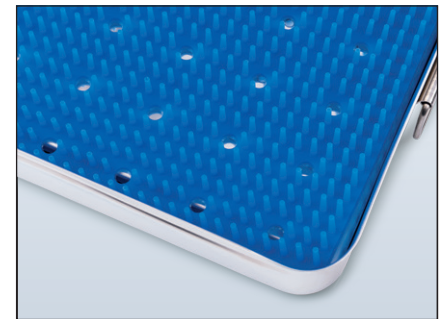
## Marking Labels

Metal Label without engraving

| Art.-No. | Description |
|----------|-------------|
| 77-1120  | Blue        |
| 77-1121  | Red         |
| 77-1122  | Green       |
| 77-1123  | Yellow      |
| 77-1124  | Black       |
| 77-1125  | Brown       |

Metal Label with engraving  
(one or two line with specify text)

| Art.-No.  | Description |
|-----------|-------------|
| 77-1120.E | Blue        |
| 77-1121.E | Red         |
| 77-1122.E | Green       |
| 77-1123.E | Yellow      |
| 77-1124.E | Black       |
| 77-1125.E | Brown       |



## Silicone Mat

| Art.-No. | Measure mm |
|----------|------------|
| 77-1201  | 195 × 135  |
| 77-1202  | 390 × 091  |
| 77-1203  | 392 × 144  |
| 77-1204  | 275 × 185  |
| 77-1205  | 255 × 245  |
| 77-1206  | 370 × 185  |
| 77-1207  | 365 × 252  |
| 77-1208  | 420 × 220  |
| 77-1209  | 374 × 120  |
| 77-1210  | 460 × 240  |



01



02



03



04



05



06



07



08

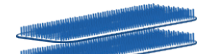
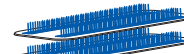


09



10

## SurgiBOX™ Micro



with permanent PTFE (Teflon) filters

with silicone racks  
1 level, height 65 mm  
(custom adapted on request)

with silicone strips  
1 level, height 55 mm

with silicone strips  
2 level, height 75 mm

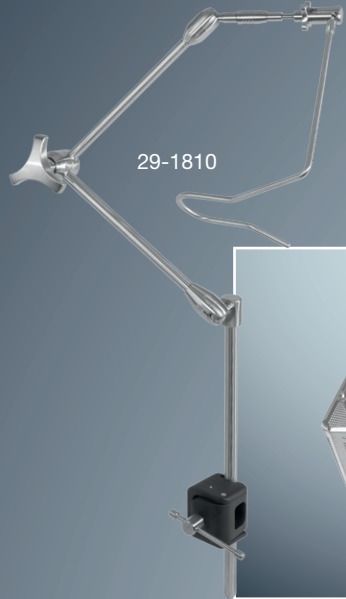
with silicone mat  
1 level, height 55 mm

with silicone mat  
2 level, height 75 mm

| Type | Length × Wide mm | Art.-No.       | Art.-No.       | Art.-No.       | Art.-No. | Art.-No. |
|------|------------------|----------------|----------------|----------------|----------|----------|
| 01   | 220 × 165        | <b>77-0121</b> | 77-0101        | 77-0111        | 77-0101V | 77-0111V |
| 02   | 420 × 125        | 77-0122        | 77-0102        | 77-0112        | -        | -        |
| 03   | 420 × 175        | 77-0123        | <b>77-0103</b> | 77-0113        | -        | -        |
| 04   | 300 × 220        | 77-0124        | 77-0104        | 77-0114        | 77-0104V | 77-0114V |
| 05   | 285 × 280        | 77-0125        | 77-0105        | 77-0115        | 77-0105V | 77-0115V |
| 06   | 410 × 225        | 77-0126        | 77-0106        | 77-0116        | 77-0106V | 77-0116V |
| 07   | 400 × 290        | 77-0127        | 77-0107        | 77-0117        | 77-0107V | 77-0117V |
| 08   | 450 × 260        | 77-0128        | 77-0108        | <b>77-0118</b> | -        | -        |
| 09   | 400 × 150        | 77-0129        | 77-0109        | 77-0119        | -        | -        |
| 10   | 495 × 270        | 77-0130        | <b>77-0110</b> | 77-0120        | 77-0110V | 77-0120V |



Large special Trays



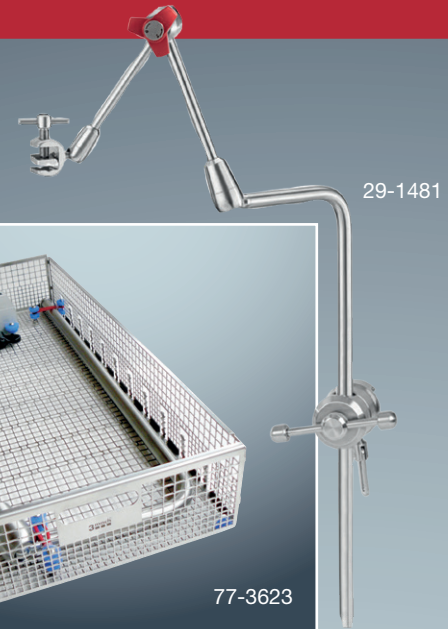
29-1810



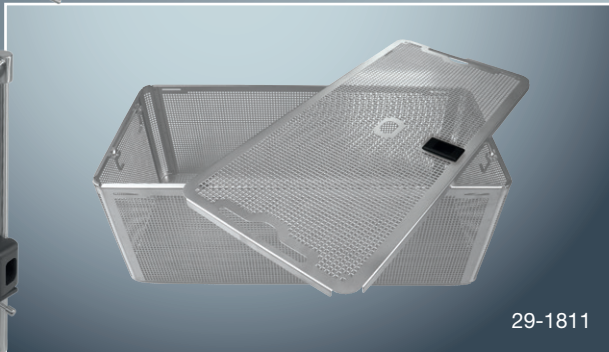
77-6162.01



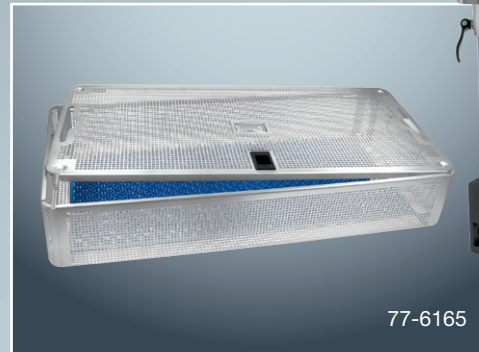
77-3623



29-1481



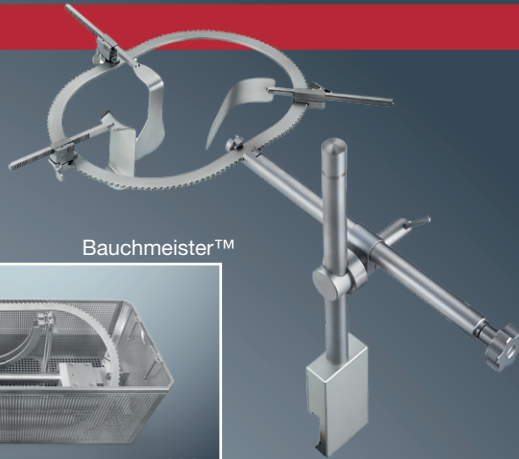
29-1811



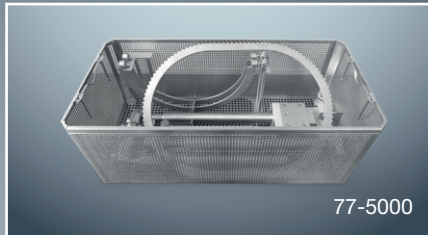
77-6165



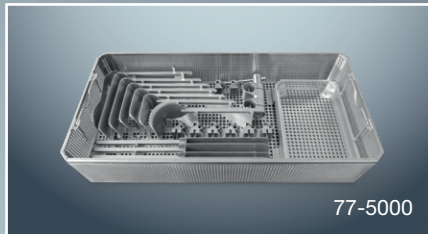
Tractor™  
Bridge



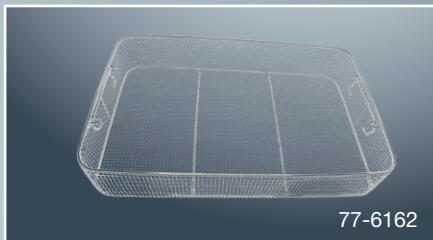
Bauchmeister™



77-5000



77-5000



77-6162

## Large Special Trays for

### Iron Assistant™

for 29-1481, 29-1481/I, 29-1482, 29-1482/I

| Art.-No.          | Description   |
|-------------------|---|
| <b>77-3623</b>    | with lid - 536 × 240 × 85 mm                          |
| <b>77-3623.20</b> | with lid - 536 × 240 × 85 mm - for two Iron Assistant |

for 29-1481G

| Art.-No.            | Description               |
|---------------------|---------------------------|
| <b>77-6162.01</b>   | 535 × 340 × 95 mm         |
| <b>77-6162.01LD</b> | lid for 77-6162.01, 12 mm |

### Iron Assistant™ with Quick Connect

for 29-1810

| Art.-No.       | Description                   |
|----------------|-------------------------------|
| <b>29-1811</b> | with lid - 540 × 253 × 197 mm |

### Bauchmeister™

| Art.-No.       | Description  |
|----------------|--|
| <b>77-5000</b> | with lid - 540 × 255 × 190 mm and 540 × 255 × 100 mm |

### Tractator™ Bridge

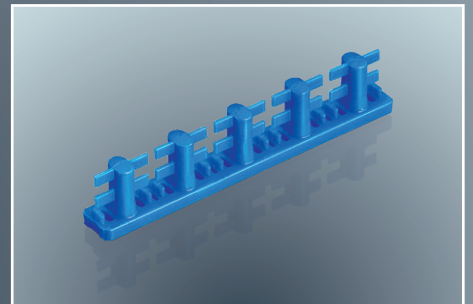
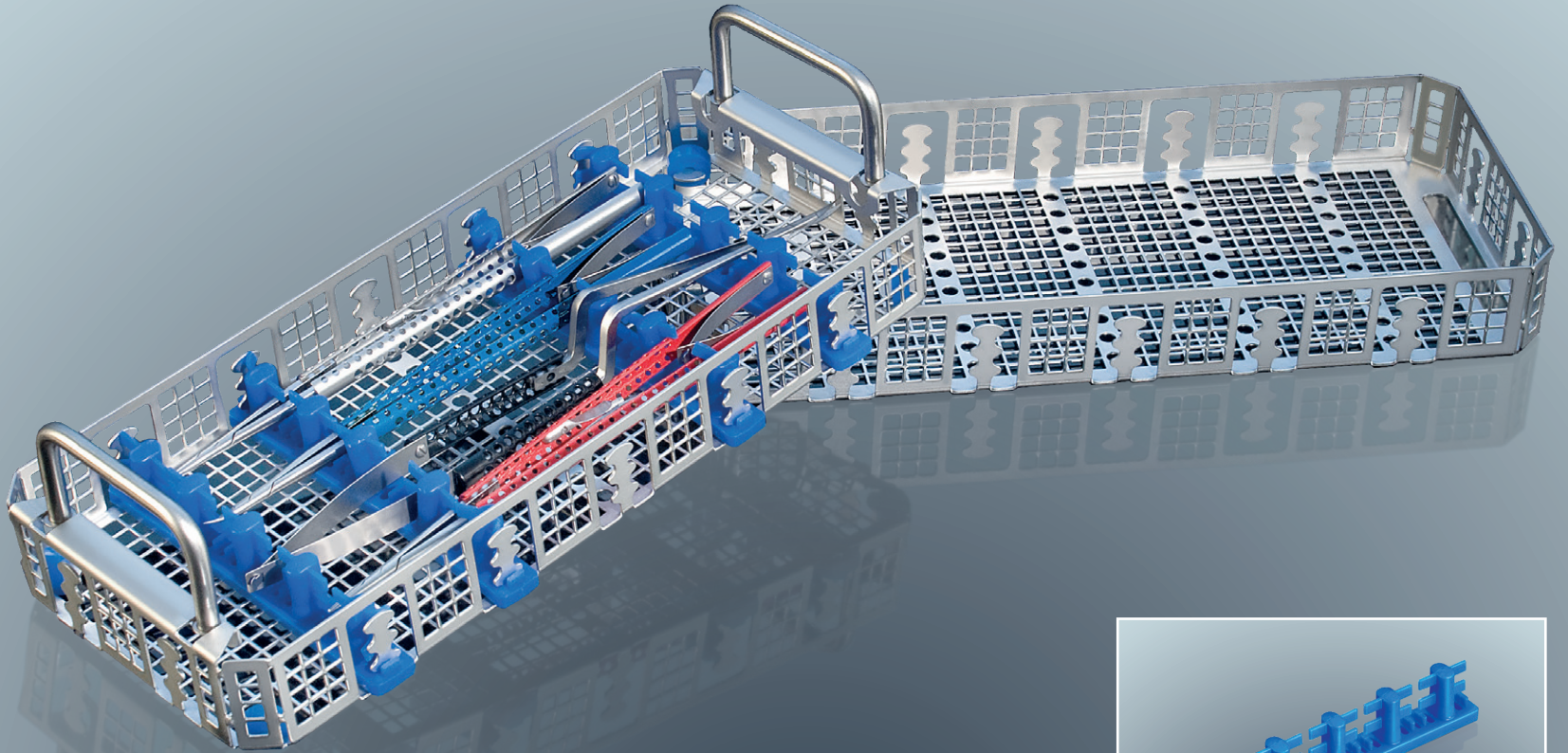
| Art.-No.       | Description                                    |
|----------------|--|
| <b>77-6165</b> | with lid and silicone mat - 600 × 300 × 100 mm |

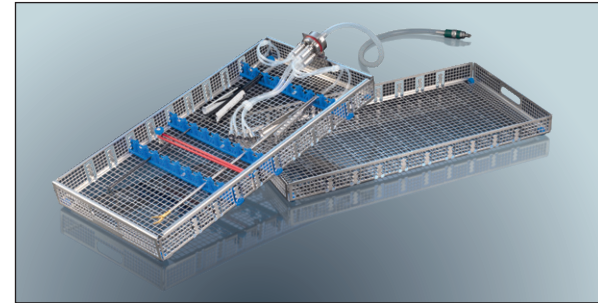
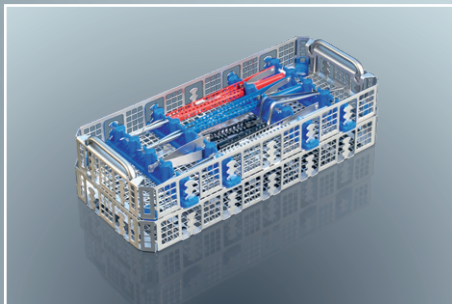
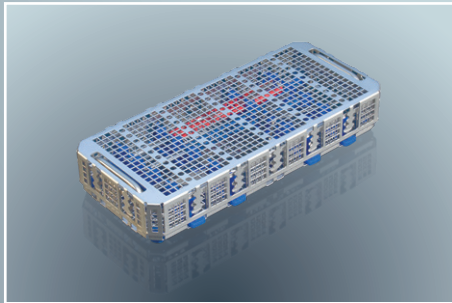
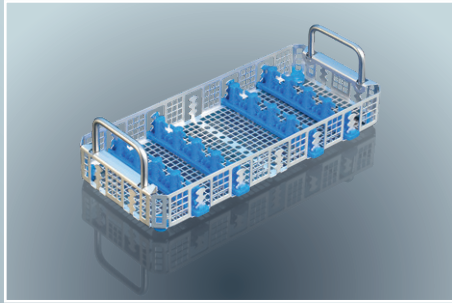
### Large Instruments

| Art.-No.       | Description        |
|----------------|--------------------|
| <b>77-6162</b> | 533 × 337 × 101 mm |



System Tray





For ValveGate™ Pro System Tray see our special catalog.  
[www.geister.com](http://www.geister.com)

## For secure Washing and Storage

of up to 4 delicate microsurgical instruments

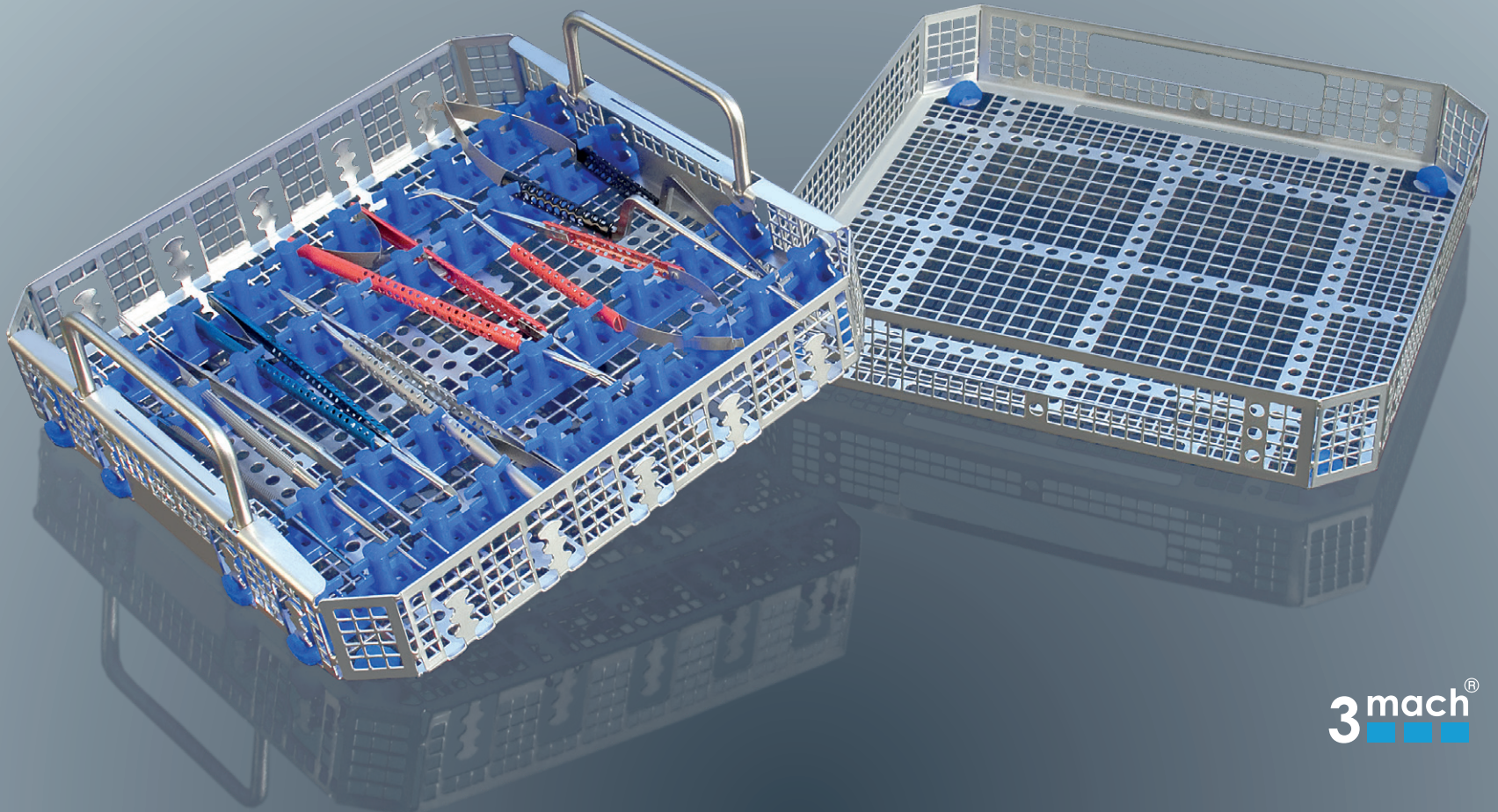
To ensure the functionality and long life of your microsurgical instruments, it is strongly recommended that they are placed in a special microsurgical instrument tray during machine washing, during sterilization and for storage. Large perforated finger mats provide maximum protection for instruments with prevention of metal on metal contact, maximum steam penetration and drainage during sterilization, as well as great flexibility in instrument placement.

## Small System Tray Basket Container

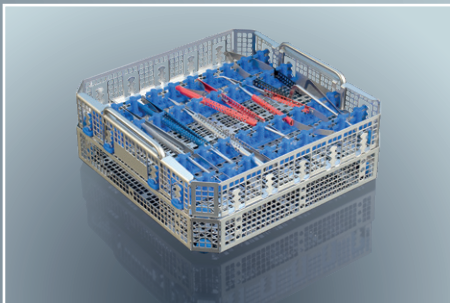
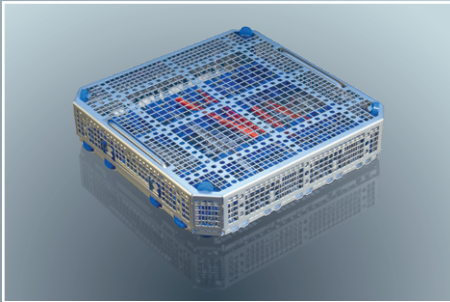
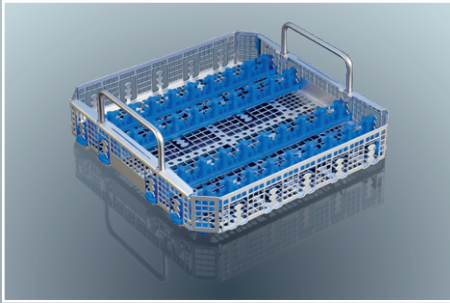
| Art.-No.       | Description  |
|----------------|--|
| <b>77-3640</b> | variable bracket and mounts<br>265 × 115 × 45 mm, with lid |



## System Tray





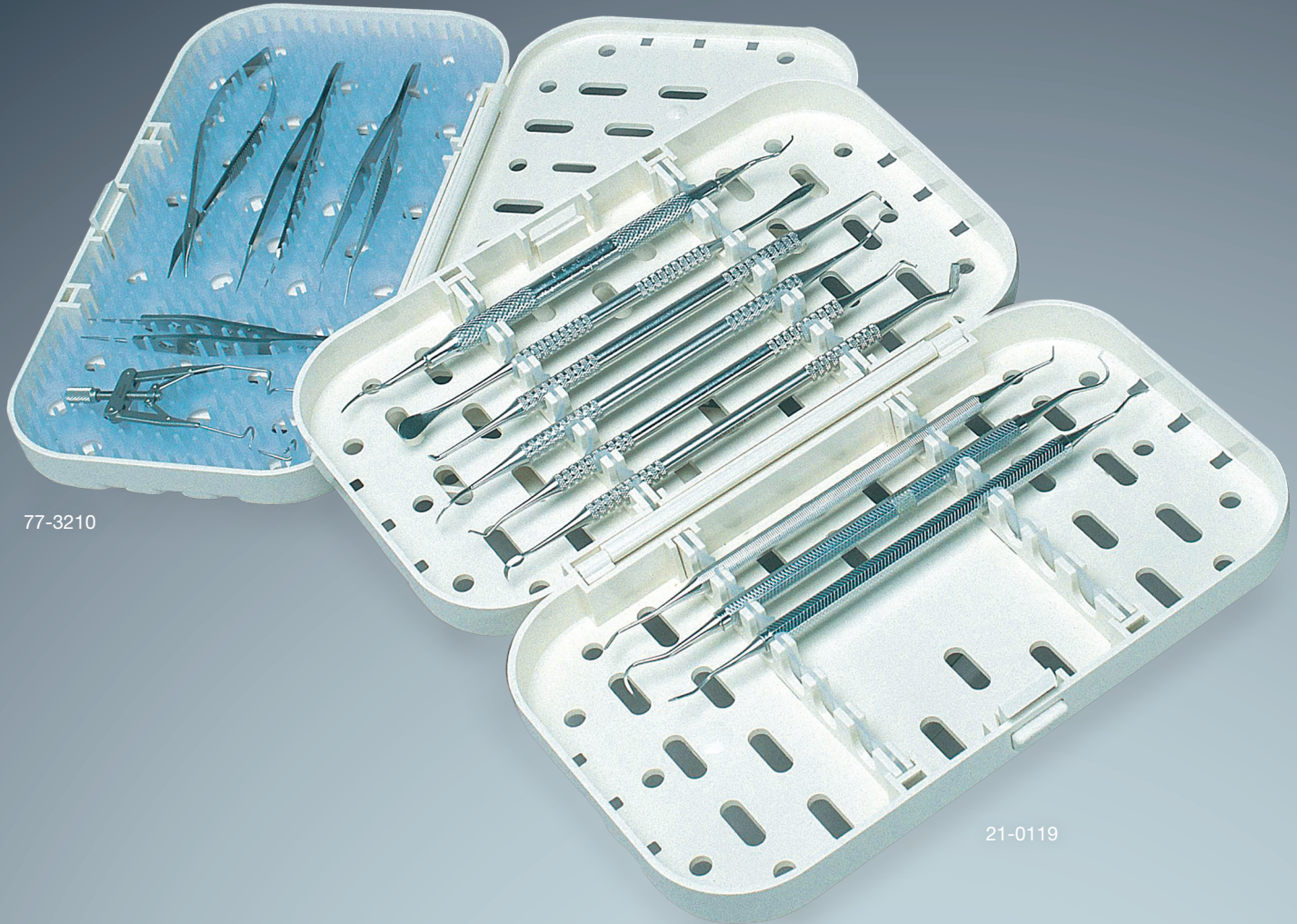


## System Tray

To ensure the functionality and long life of your microsurgical instruments, it is strongly recommended that they are placed in a special microsurgical instrument tray during machine washing, during sterilization and for storage. Large perforated finger mats provide maximum protection for instruments with prevention of metal on metal contact, maximum steam penetration and drainage during sterilization, as well as great flexibility in instrument placement.

### Medium System Tray Basket Container

| Art.-No.       | Measure mm | Description                           |
|----------------|------------|---------------------------------------|
| <b>77-3645</b> | 240×240×45 | variable bracket and mounts, with lid |



77-3210

21-0119

## SurgiBOX™ Plastic

These economic, durable and multifunctional cassettes offer the ability to accommodate a wide array of delicate instruments.

They can be closed securely with a unique clip and hinge design. Silicone racks can accommodate instruments with diameters ranging from 2.5 to 8 mm.

## SurgiBOX™ Plastic

with lid

| Art.-No.       | Measure mm     | Description  |
|----------------|----------------|--|
| 21-0118        | 203 × 114 × 15 | 6-Position slotted cassette for 6 instruments Ø 2.5–8 mm   |
| <b>21-0119</b> | 203 × 114 × 30 | 12-Position slotted cassette for 12 instruments Ø 2.5–8 mm |
| <b>77-3210</b> | 203 × 114 × 15 | Shallow instrument cassette with silicone mat              |
| 77-3230        | 203 × 114 × 30 | Deep instrument cassette with silicone mat                 |

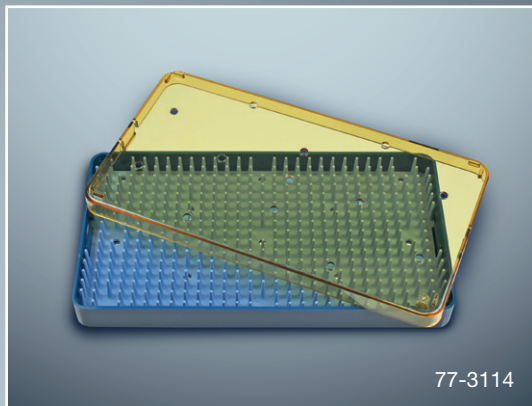
## SurgiBOX™ Plastic Mini

with lid and silicone mat

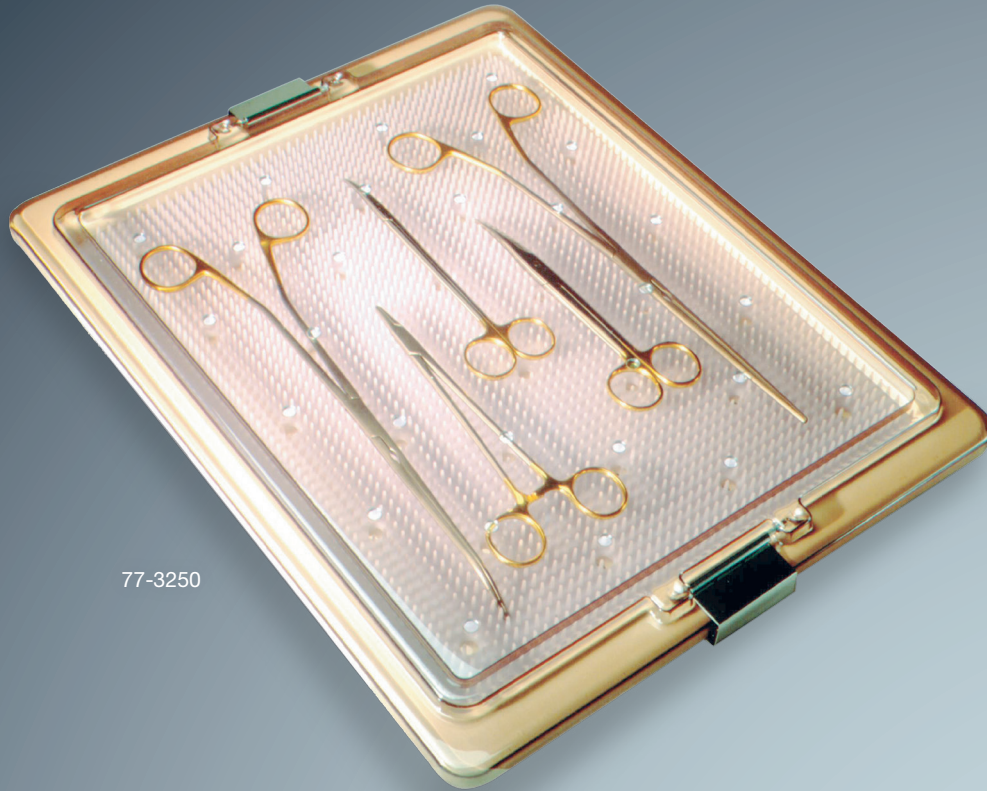
| Art.-No.       | Measure mm     | Measure Inches"  | Description                          |
|----------------|----------------|------------------|--------------------------------------|
| 77-3110        | 150 × 60 × 20  | 2.5 × 6.0 × 0.75 |                                      |
| 77-3111        | 150 × 60 × 30  | 2.5 × 6.0 × 1.25 |                                      |
| 77-3112        | 190 × 60 × 20  | 2.5 × 7.5 × 0.75 |                                      |
| 77-3113        | 165 × 100 × 20 | 4.0 × 7.5 × 0.75 |                                      |
| <b>77-3114</b> | 190 × 100 × 20 | 4.0 × 7.5 × 0.75 |                                      |
| 77-3115        | 190 × 100 × 40 | 4.0 × 7.5 × 1.5  |                                      |
| 77-3116        | 250 × 150 × 20 | 6.0 × 10 × 0.75  |                                      |
| 77-3120        | 250 × 150 × 40 | 6.0 × 10 × 1.5   | two-level, deep with 2 silicone mats |
| 77-3121        | 250 × 150 × 40 | 6.0 × 10 × 1.5   | deep with 1 silicone mat             |



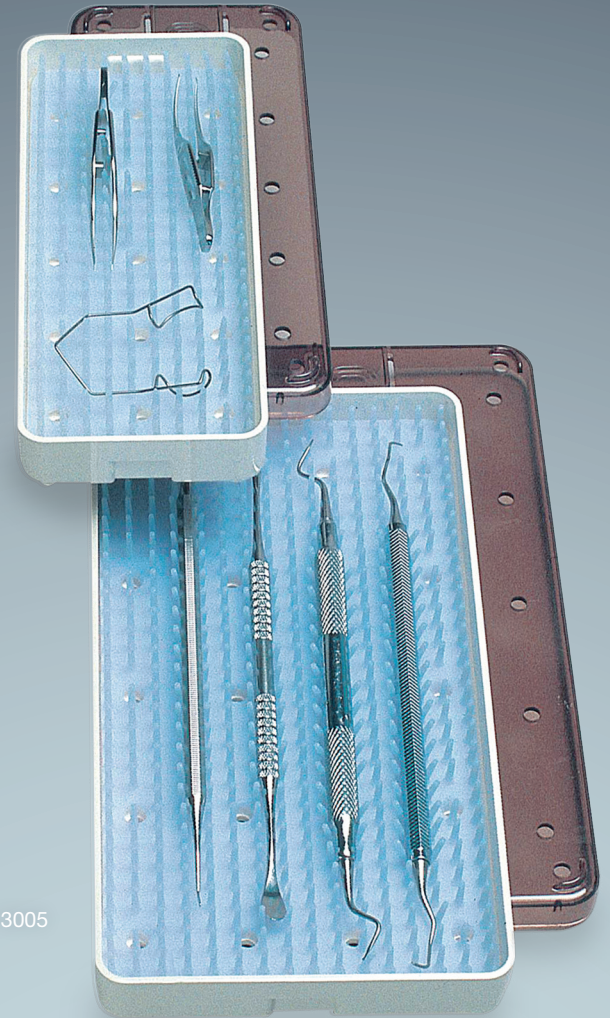
77-3210



77-3114



77-3250



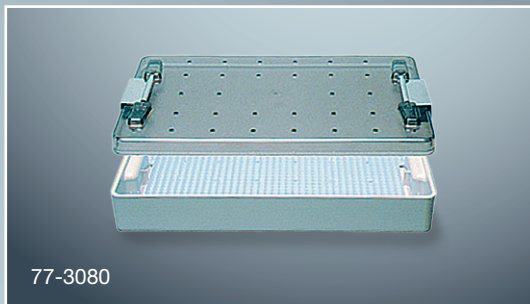
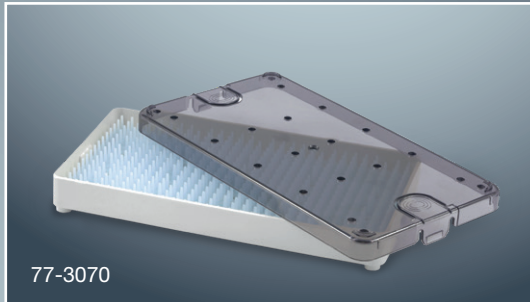
77-3005

## SurgiBOX™ Plastic

Designed to accommodate micro to medium sized instrumentation. These trays with their expanded capacity provide ample space to configure comprehensive procedural sets. Silicone mats allow for the efficient placement of instruments and the unique raised design helps to facilitate the sterilization process. Clear Radel® lids allow for the easy identification of instruments.

with clear lid

| Art.-No.       | Measure mm     | Description                                     |
|----------------|----------------|---|
| <b>77-3250</b> | 298 × 368 × 19 | Large 11 × 14" tray with silicone mat (shallow) |
| 77-3260        | 262 × 465 × 59 | Large 10 × 18" tray with silicone mat (deep)    |
| 77-3270        | 210 × 439 × 16 | Large 8 × 17" tray with silicone mat (shallow)  |
| 77-3280        | 483 × 356 × 17 | Full size silicone mat (no holes)               |



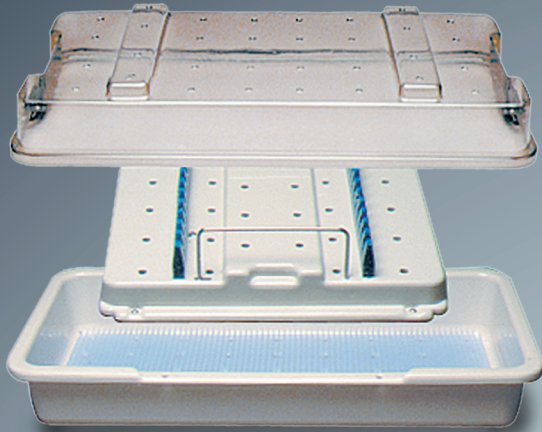
## SurgiBOX™ Plastic Mini

This line of small to medium sized trays has been specially designed to help organize and protect your mini to microsurgical instrumentation during sterilization, surgical presentation and storage. An array of sizes is available to customize procedural sets. Silicone mats allow for the efficient placement of instruments and the unique raised design helps to facilitate the sterilization process. Clear Radel® lids allow for the easy identification of instruments

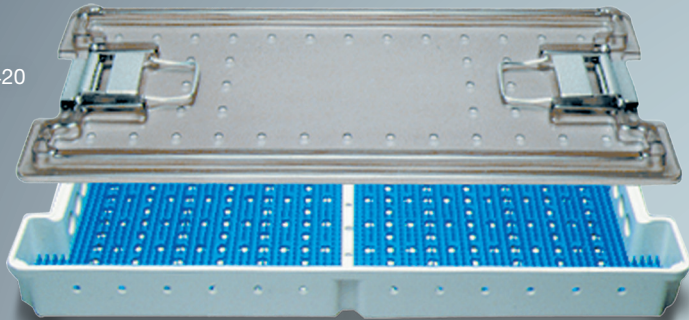
| Art.-No.       | Measure mm       | Description  |
|----------------|------------------|--|
| <b>77-3005</b> | 180 × 49 × 18.5  | Small 2 × 7" tray, lid and silicone mat                                  |
| 77-3030        | 148 × 64 × 18.5  | Small 3 × 6" tray, lid and silicone mat                                  |
| 77-3040        | 180 × 73 × 18.5  | Small 3 × 7" tray, lid and silicone mat                                  |
| <b>77-3070</b> | 190 × 102 × 18.5 | Small 4 × 8" tray, lid and silicone mat                                  |
| <b>77-3080</b> | 270 × 160 × 16.0 | Medium 7 × 11" tray, lid and silicone mat (shallow)                      |
| 77-3090        | 270 × 160 × 35.0 | Medium 7 × 11" tray, lid and silicone mat (deep)                         |
| 77-3100        | 270 × 160 × 35.0 | Medium 7 × 11" tray, lid, insert tray and 2 silicone mats (double level) |



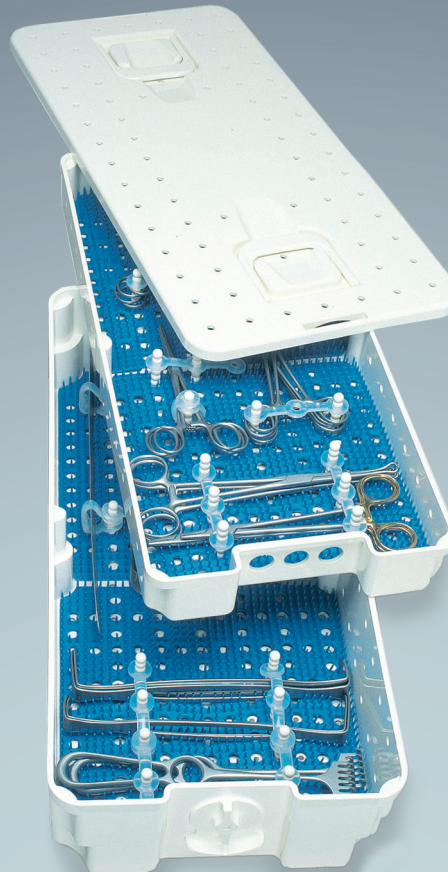
77-3600



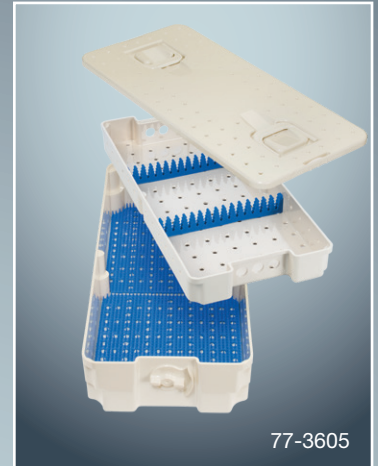
77-3420



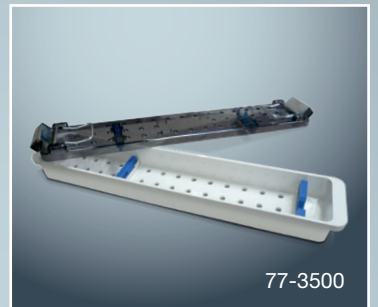
77-3400



77-3605



77-3500



## SurgiBOX™ Plastic

To accommodate a wide array of endoscopic and other hand-held instruments and endoscopes we have designed a range of specialty containers:

The convertible laparoscopy tray holds three sizes of laparoscopic instruments: 3 mm, 5 mm, and 10 mm. The tri-level silicone strips will accommodate up to 12 instruments. Instruments can also be placed in the full-size base with silicone mat.

The convertible hand held instrument tray (e.g. for spinal, neuro, arthroscopy or micro instruments) is designed with 4 silicone strips to accommodate a maximum of 16 hand-held instruments 4 mm in diameter. Additional instruments or scopes may be placed in the full-size base with silicone mat. The optional instrument stand holds up to 8 ring-handled microsurgical instruments in an upright position for easy access by the O.R. staff.

The scope tray is fitted with silicone strips designed to hold your delicate scopes in a secure and protective environment.

| Art.-No.       | Measure mm      | Description  |
|----------------|-----------------|--|
| <b>77-3600</b> | 478 × 203 × 130 | Convertible ValveGate™ & Laparoscopy Base w. mat, removable insert, clear lid            |
| <b>77-3605</b> | 502 × 239 × 102 | ValveGate™ Base w. mats, removable insert, with silicone strips for up to 10 instruments |
| <b>77-3500</b> | 394 × 70 × 35   | Single Scope Tray medium<br>1 scope 1-10 mm, max. 39 cm long                             |

## SurgiBOX™ Plastic, modular

Designed for large size instrument sets. Insert and base can be used together or separately with dedicated lids. Standard silicone cradles are available to help secure and organize the instruments. The flex system accessories provide the ability to place instruments in an organized procedural format. It includes posts and tie-downs to secure instruments and can be easily modified to accommodate change in layout.

Silicone mats are also available for the efficient placement of the instruments. Perforations allow for optimum steam penetration and drying. This economical, durable, functional and lightweight plastic container comes with a unique one-step positive latching system.

| Art.-No.       | Measure mm      | Description  |
|----------------|-----------------|--|
| <b>77-3400</b> | 502 × 239 × 102 | Plastic Container, double-level assembly 4" deep, consist of: Base 4", insert 2", 4 half mats, lid |
| 77-3410        | 502 × 239 × 102 | Plastic Container, single-level assembly 4" deep, consist of: insert, 2 half mats and lid          |
| <b>77-3420</b> | 464 × 229 × 51  | Plastic Container, single-level assembly 2" deep, consist of: insert, 2 half mats, clear lid       |

The better way to operate™

# GEISTER®



**GEISTER MEDIZINTECHNIK GMBH**

Föhrenstrasse 2 | D-78532 Tuttlingen | Germany

☎ +49 7461/966240 | ☎ +49 7461/9662422

[www.geister.com](http://www.geister.com) | [info@geister.com](mailto:info@geister.com)

