

AL6X Blood Filter

Low prime volume arterial filter with X Coating™



Designed for enhanced safety
and biocompatibility

- Equipped with Terumo's own surface treatment – X Coating™
- Reduces prime volume (100 ml)
- Very low pressure drop
- Optically clear housing enables easy priming and debubbling
- Non-turbulent tangential flow path minimizes blood trauma
- 40 µm lock-woven polyester screen filter
- No potting resins or adhesives



AL6X Blood Filter

Optimal Design

- Computational Flow Dynamics (CFD) and Magnetic Resonance Imaging (MRI) technologies have been employed to create a non-turbulent tangential flow path reducing rheological stress and potential blood damage.
- Computer Aided Design (CAD) reduces prime volume and optimizes priming and debubbling.
- Treated with X Coating™, an amphiphilic, biopassive polymer coating that reduces protein denaturation and platelet adhesion.

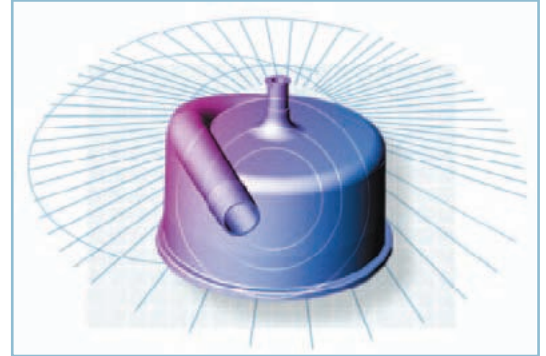
Specifications

Housing material	Polycarbonate
Filter material	Lock woven polyester
Filter	40 micron
Filter surface area	550 cm ²
Blood ports	3/8"
Prime volume	100 ml
Maximum blood flow rate	8 l/min
Pressure drop	Less than 15 mmHg at 6 l/min

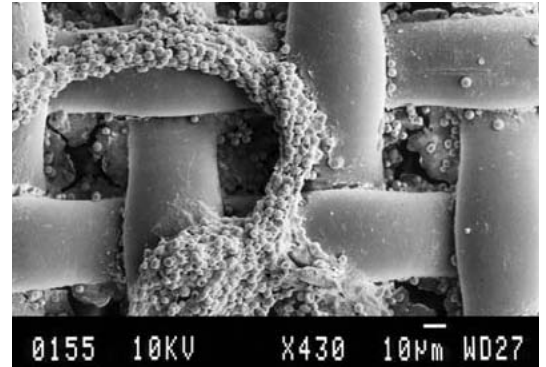
Ordering Information

Description	Unit/ Case	Catalog No.
AL6X Arterial Blood Filter, sterile	10	AL6X
AL6X Arterial Blood Filter, non-sterile*	60	ZZAL6X
Filter Holder	1	FH1

*Non-sterile products are not for sale to end-users/hospitals. Products not CE-marked are only available for validated tubing packers to include in their CE-marked tubing sets.



The Pall AL6X filter has been developed using CAD, CFD and MRI technologies to significantly enhance overall performance of arterial blood filtration in extracorporeal service.



An electron micrograph showing particulate debris on the 40 µm filter media.



Terumo Corporation
44-1, 2-chome, Hatagaya
Shibuya-ku, Tokyo 151-0072,
Japan
Tel.: +81 3 3374 8111
Fax: +81 3 3374 8196

European Headquarters

Terumo Europe N.V.
Interleuvenlaan 40
3001 Leuven, Belgium
Tel.: +32 16 38 12 11
Fax: +32 16 40 02 49

European Offices

**Terumo Europe N.V.
Benelux Sales Division**
Interleuvenlaan 40
3001 Leuven, Belgium
Tel.: +32 16 39 25 80
Fax.: +32 16 39 25 99
The Netherlands:
Tel.: 0800 0220396
Fax: 0800 0220414

Laboratoires Terumo France S.A.
Parc Ariane - Bât. Uranus
1 rue Hélène Boucher
78284 Guyancourt Cedex, France
Tel.: +33 130 96 13 00
Fax: +33 130 43 60 85

Terumo Deutschland GmbH
Ludwig-Erhard-Strasse 6
65760 Eschborn, Germany
Tel.: +49 6196 80 230
Fax: +49 6196 80 23 200

Terumo Deutschland GmbH
Zweigniederlassung Wettingen
Bodenackerstrasse 3
8957 Spreitenbach, Switzerland
Tel.: +41 56 419 10 10
Fax: +41 56 419 10 11

Terumo Europe España SL
Avda. Juan Carlos I, Nº 13 - 7ª Planta
Edificio Torre La Garena
28806 Alcalá de Henares (Madrid),
Spain
Tel.: +34 9021 01 298
Fax: +34 9021 01 358

Terumo Italia SRL
Via Simone Martini, 143/145
00142 Roma RM,
Italy
Tel.: +39 0651 96 14 20
Fax: +39 0650 30 407

Terumo Sweden AB
Nya Varvet, Byggnad 90
Sven Källfelts Gata 18
426 71 Västra Frölunda,
Sweden
Tel.: +46 3174 85 880
Fax: +46 3174 85 890

**Terumo Denmark
Filial of Terumo Sweden AB**
Tel.: +45 7020 93 80
Fax.: +45 7020 94 80

Terumo UK Ltd
Tamesis
The Causeway
Egham, Surrey
TW20 9AW, United Kingdom
Tel.: +44 1784 476 220
Fax: +44 1784 476 201

Terumo Europe N.V.
Moscow Representative Office
4, Ivana Franco St
121108 Moscow, Russia
Tel./Fax: +7 495 234 33 03

*Addresses subject to change,
please consult our Website.*

© Registered Trademark
Published by Terumo Europe N.V.
CV129GB-FKFK-11(07.10)E