

## **COR-VALV System**

**EFFECTIVE**...optimum exposure with a unique retractor having movable blades

**VERSATILE**...unlimited number of surgical access configurations

**SUPERIOR DURABILITY**...resistant TITANIUM construction

ADAPTABLE VALVULAR RETRACTOR

**CORONÉO**



## COR-VALV System of

A unique line of adaptable tissue access and exposure during valve (e.g., mitral, aortic, tricuspid, interventricular defects), either through the intercostal or thoracic approach.

### ADAPTABILITY... □

Rotation of the Actuation Knob permits variable blade opening and optimum exposure to the cardiac valve, thus achieving desired tissue retraction with a single instrument having movable and pivoting blades.



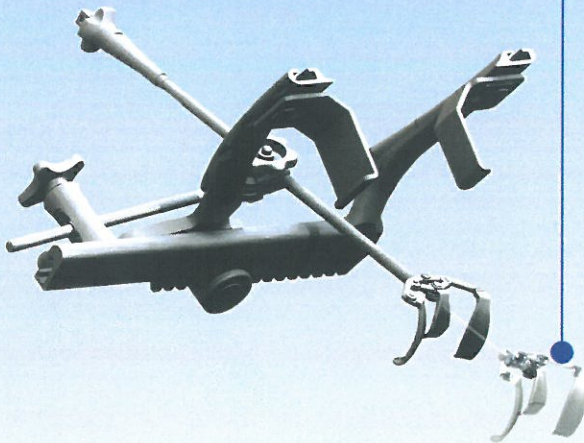
### VERSATILITY... □

The Positioning Arm provides eight (8) motion degrees of freedom and permits uncompromised and truly vertical tissue retraction.



### INTERCOSTAL APPROACH... □

The Intercostal Mitral Retractor is inserted between the ribs and is clamped directly to the Thoracic Retractor via the Positioning Arm.



### DURABILITY... □

Use of TITANIUM for the fabrication of various components provides superior wear resistance during surgical use, and corrosion resistance to caustic agents used in instrument cleaning.

### VARIETY of BLADES... □

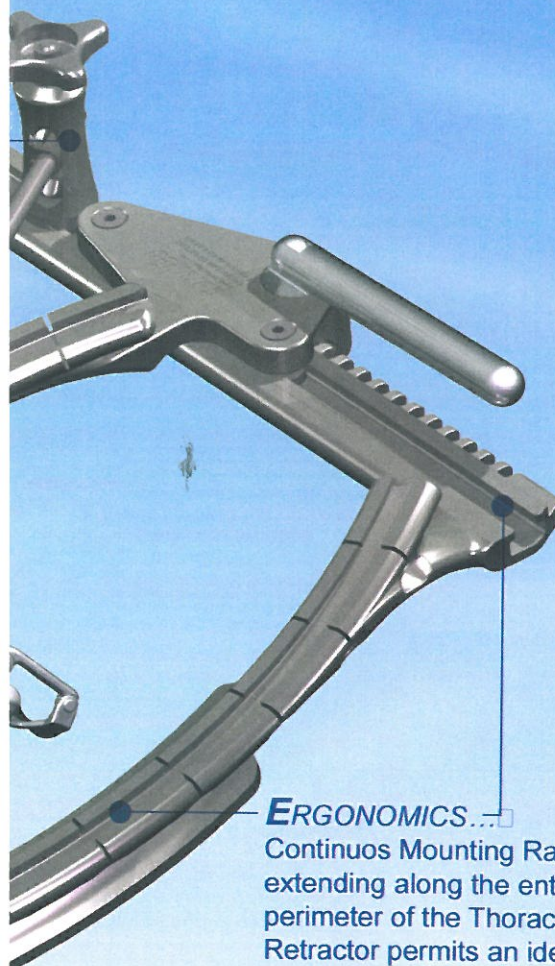
The detachable blades are available in either fixed or pivoting configurations, and in a range of blade depths and widths.



**CORONÉO**

fers...

tractors allowing optimum surgical  
surgery (aortic, mitral, tricuspid, and  
ough sternotomy or intercostal



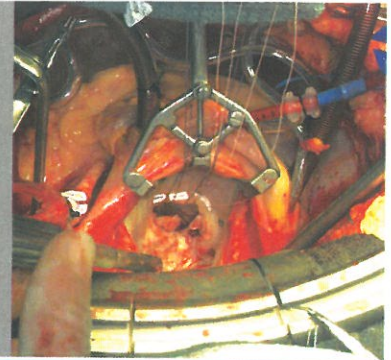
**ERGONOMICS...**

Continuos Mounting Rail  
extending along the entire  
perimeter of the Thoracic  
Retractor permits an ideal  
positioning of the different  
valvular retractors and their  
accessories.

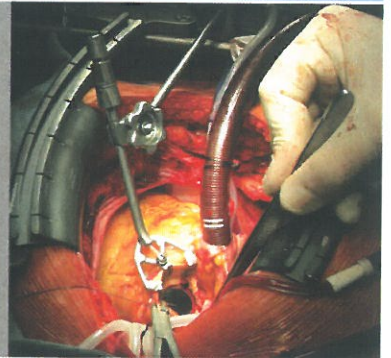
**CHOICE of RETRACTOR...**

Thoracic Retractor is available  
in three (3) different sizes, with  
fixed or detachable blades.

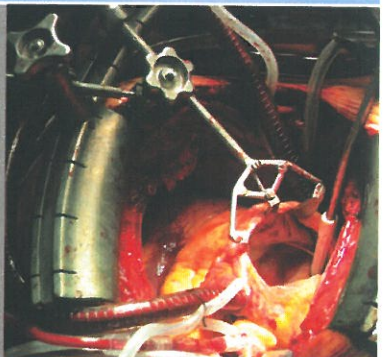
**MITRAL  
VALVE**



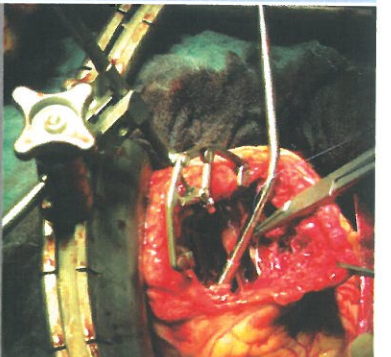
**AORTIC  
VALVE**



**TRICUSPID  
VALVE**



**INTER-  
VENTRICULAR  
DEFECT**



**MITRAL  
VALVE  
INTERCOSTAL  
APPROACH**



### Sternal Systems



Part No.	Description
1100030	COR-VALV System; Large
1100040	COR-VALV System; Small

### Intercostal Systems



Part No.	Description
1100300	COR-VALV System; Intercostal Mitral
1100333	COR-VALV System; Intercostal Aortic



## ORDERING INFORMATION

### Thoracic Retractors



Part No.	Description
1100114	Sternal Retractor (LG); Large
1100222	Sternal Retractor (SM); Small
1100235	Intercostal Retractor - Detachable Blades (available in a variety of blade configurations)

### Valve Retractors



Part No.	Description
1010676	Aortic Retractor - Sternotomy & Intercostal Approach
1010684	Mitral Retractor - Left Atrial Approach
1010729	Mitral Retractor - Trans-septal Approach
1010880	Mitral Retractor - Intercostal Approach

### Accessories



Part No.	Description
1011184	Box of 10 Sterile Cables - Mitral Retractor
1011185	Box of 10 Sterile Cables - Aortic Retractor
1010949	Replacement Cable - Intercostal Mitral Retractor

The devices described in this publication are provided for the convenience of the practicing surgeon, and are intended for purposes of illustration only. Accordingly, the devices illustrated are not an exhaustive representation and may not represent the only devices available on the marketplace for performing cardiac surgery. CORONÉO relies on the medical judgement and know-how of the practicing surgeon to select the appropriate device for the cardiac surgical procedure to be undertaken. Detailed descriptions of the indications, contra-indications and precautions during use are provided in the Instructions for Use Manual for the different devices.

Manufactured in CANADA by:

**CORONÉO**

**CORONÉO, INC.**

9250 Avenue du Parc, Suite 514  
Montreal, Quebec, H2N 1Z2, CANADA

www.coroneo.com

Tel. : (514) 336-9230 Fax : (514) 334-9778

Distributed by: